

CITADELLE

nom féminin, (italien *cittadella*, de *città*, ville)

1. Ouvrage fortifié indépendant servant autrefois de réduit pour la défense d'une place importante. *synonyme: forteresse*

2. Centre principal où l'on défend des idées, une doctrine, etc. *synonyme: centre*

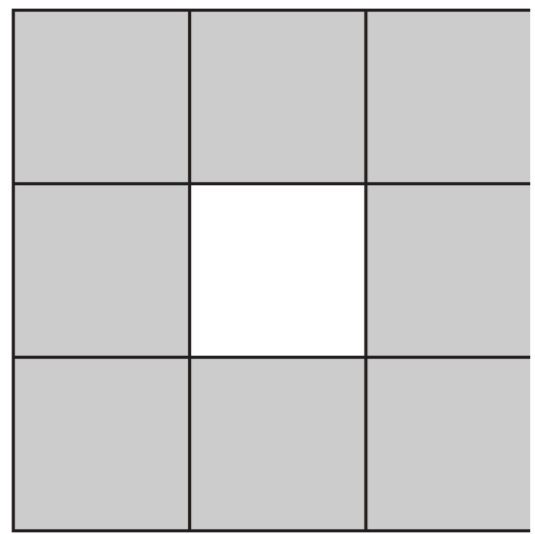
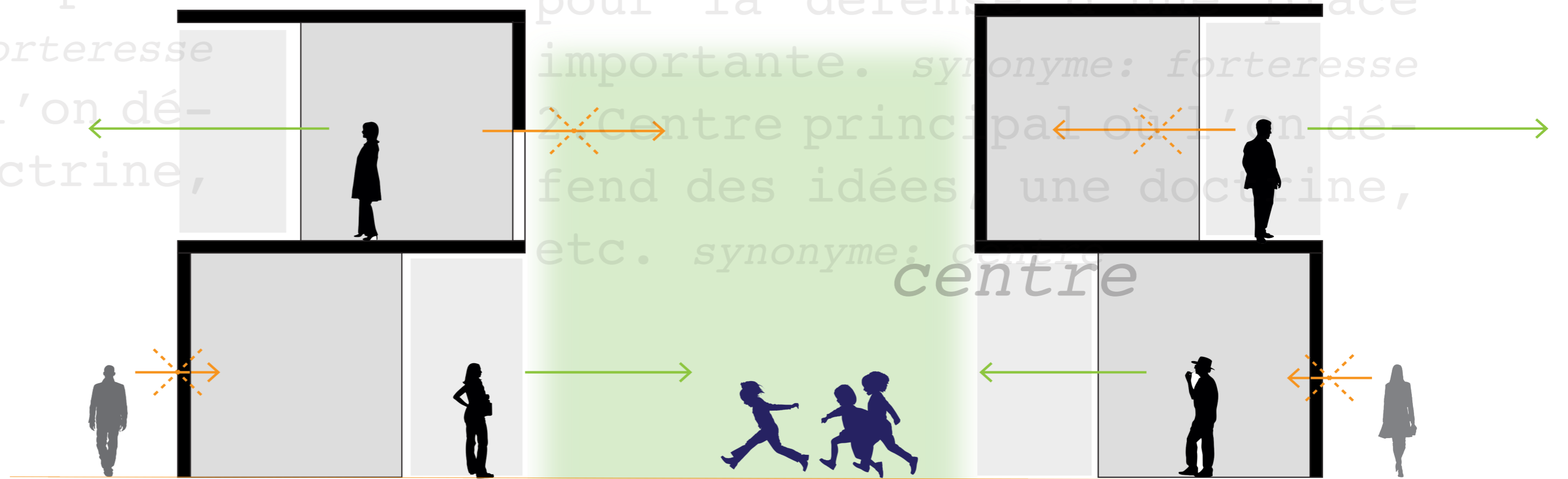


1. Ouvrage fortifié indépendant

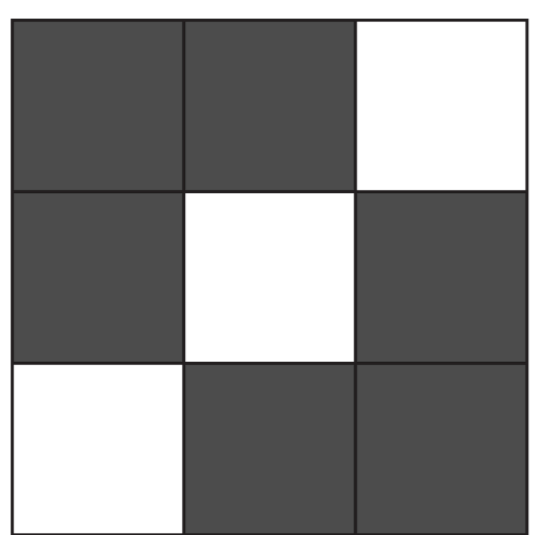


1. Ouvrage fortifié *indépendant*

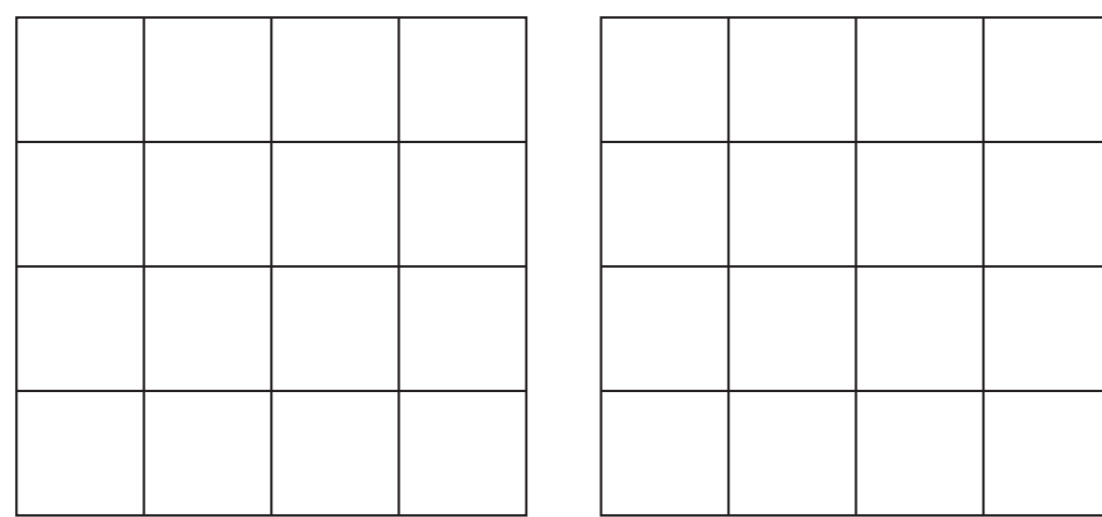
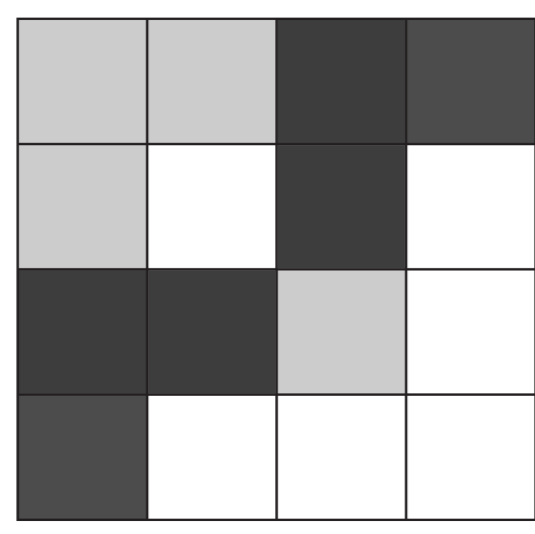
servant autrefois de réduit pour la défense d'une place importante. *synonyme: forteresse*
Centre principal où l'on défend des idées, une doctrine, etc. *synonyme: centre*



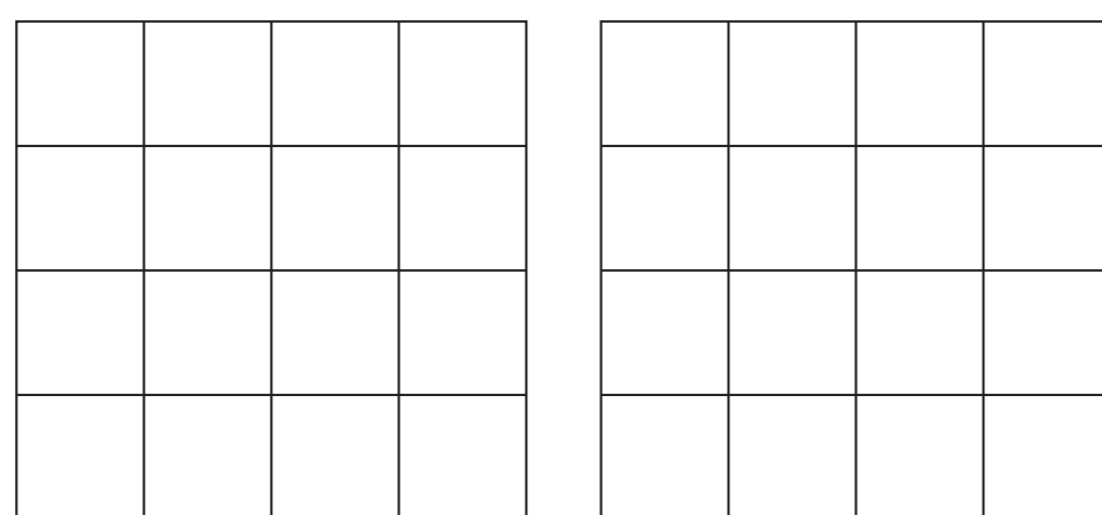
FORMES À LA BASE DU CONCEPT



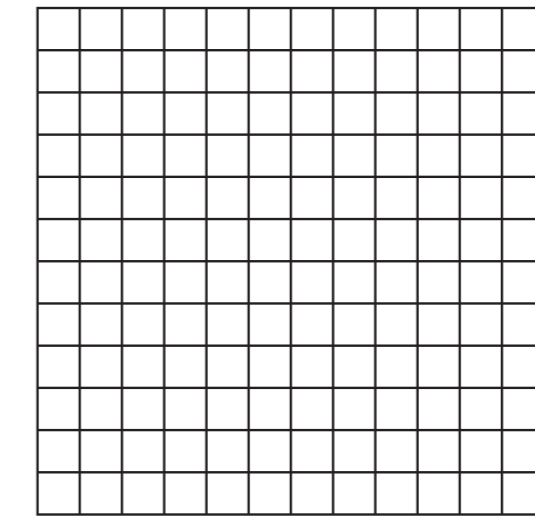
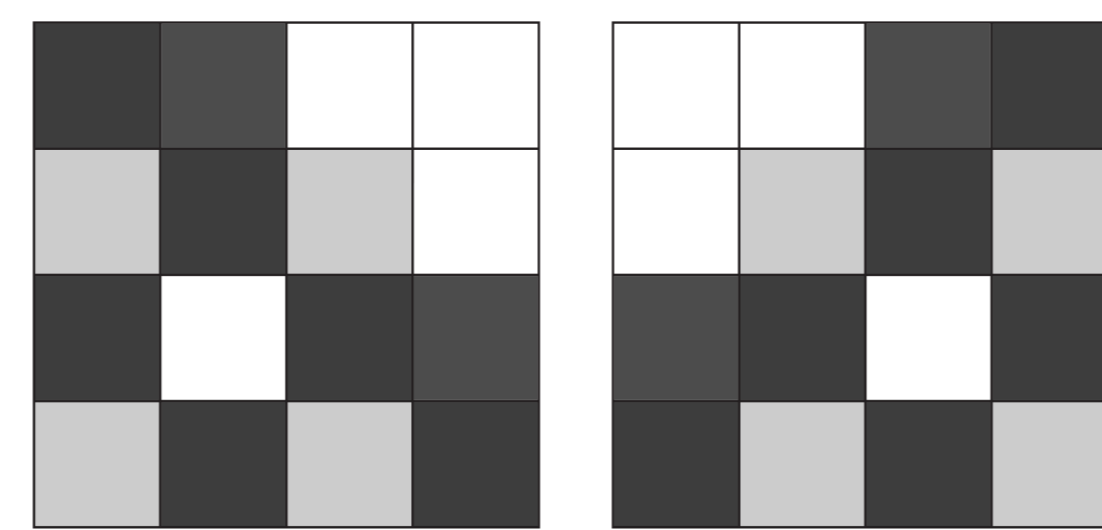
AGANCEMENT DES FORMES DE BASE



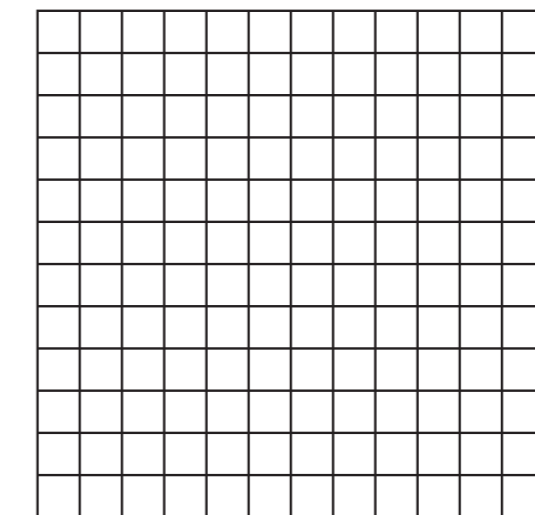
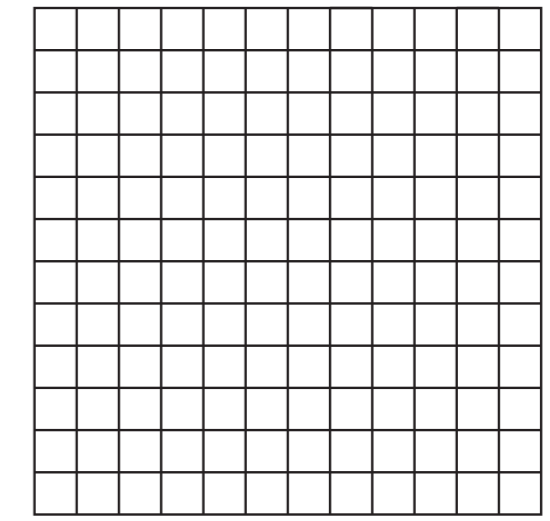
TRAME DE GRANDE ÉCHELLE POUR DÉFINIR LES PLANS HORIZONTAUX



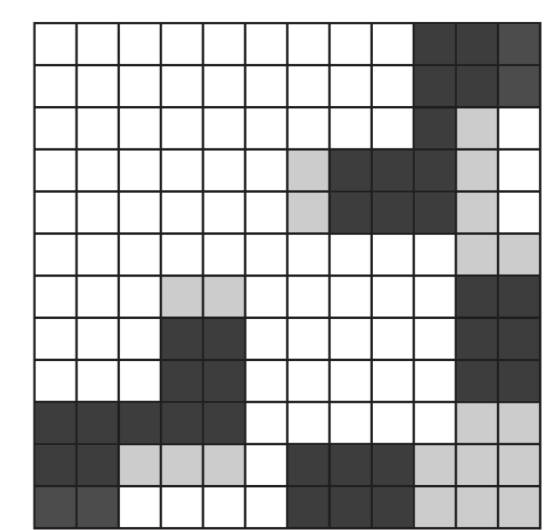
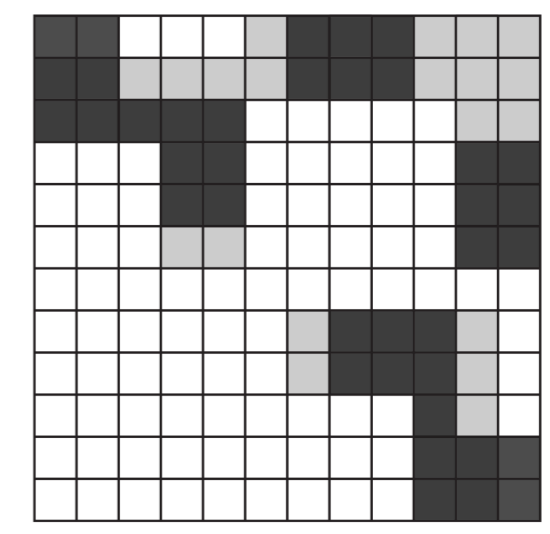
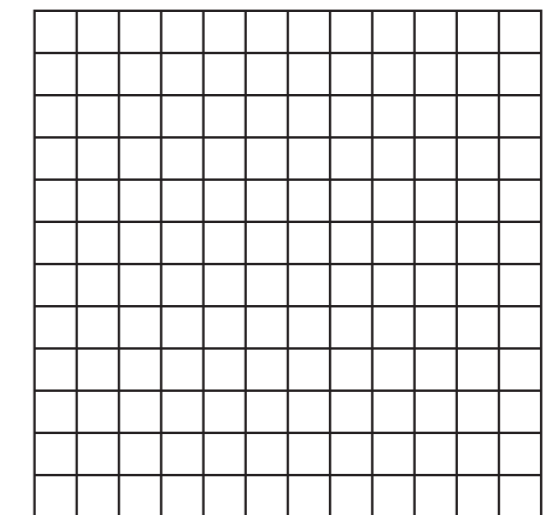
CHAMPS POUR DÉFINIR DES TOITURES ET DES PATIOS



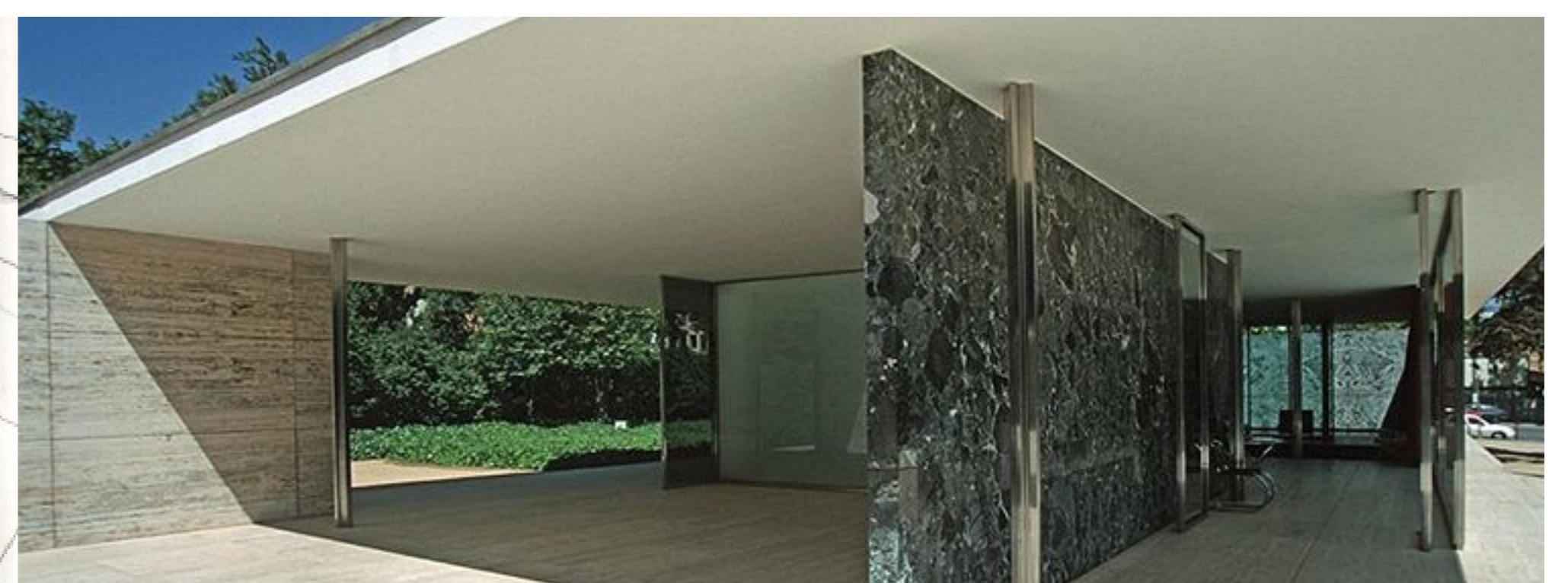
TRAME AFFINÉE POUR DÉFINIR LES ESPACES INTÉRIEURS



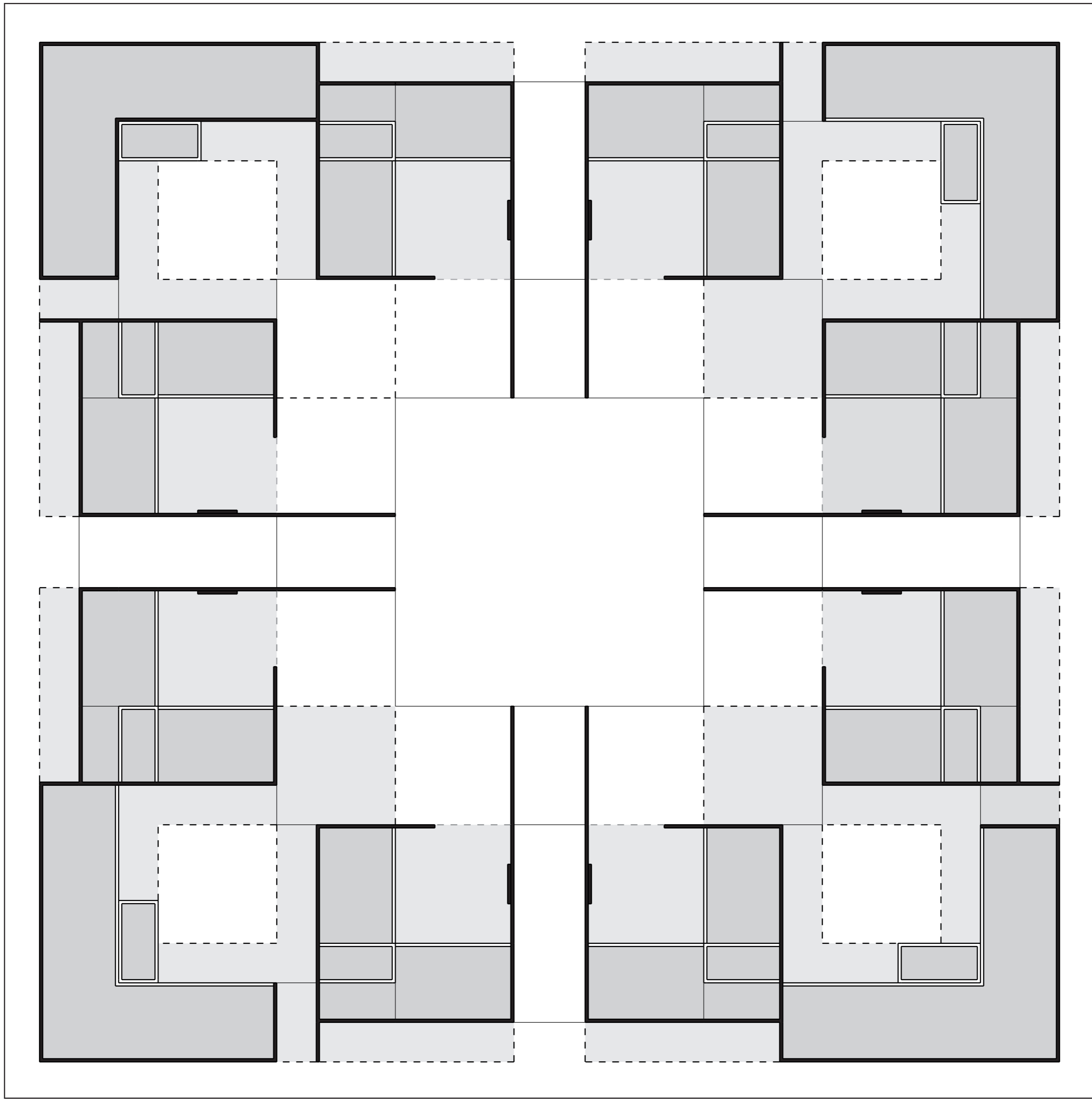
CHAMPS PERMETTANT LA DIMINUTION DES ESPACES INTÉRIEURS CHAUFFÉS



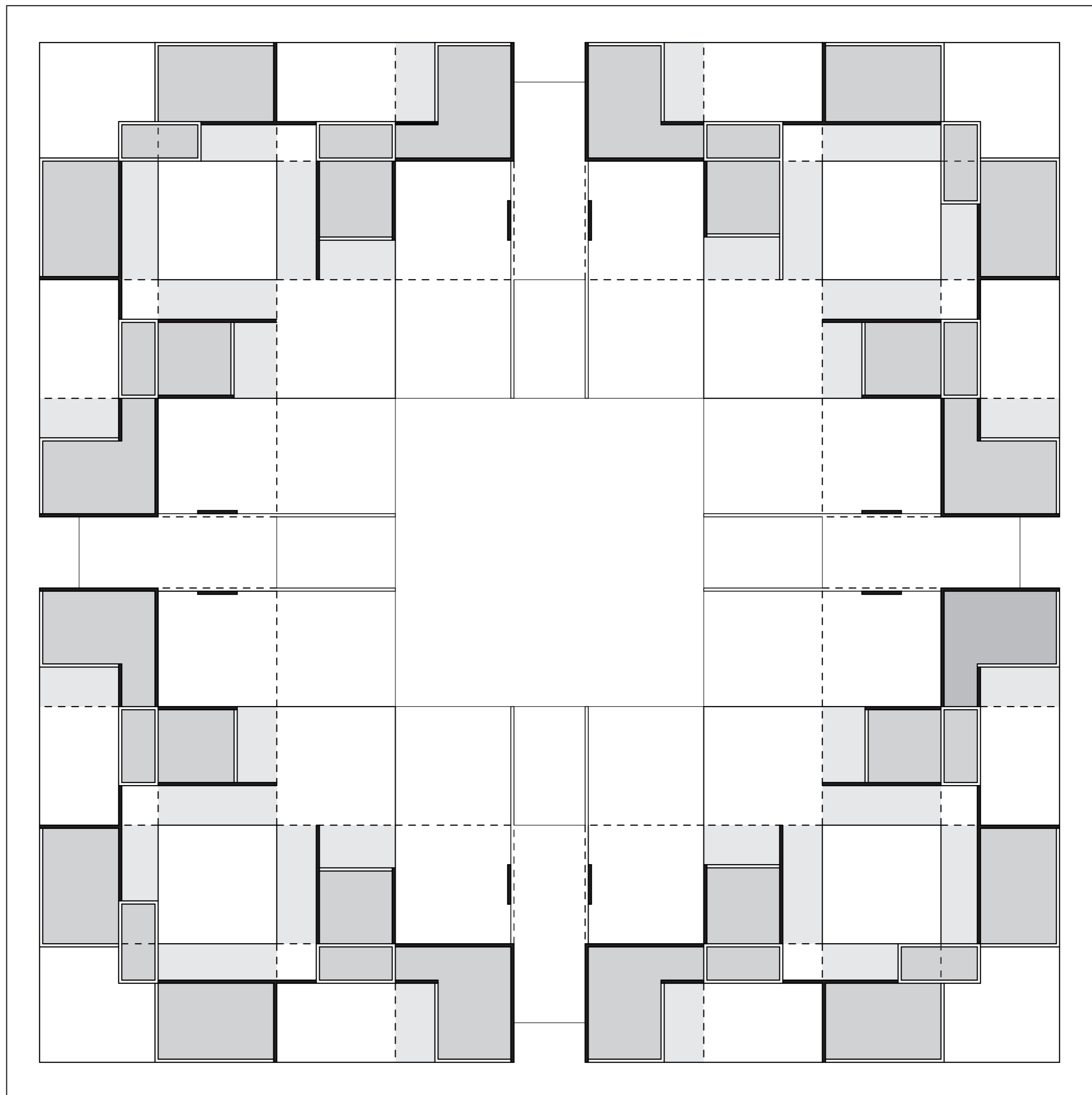
_cooling the city by removing the asphalt
KAZUHIRO SUEMITSU ET YOKO SUEMITSU



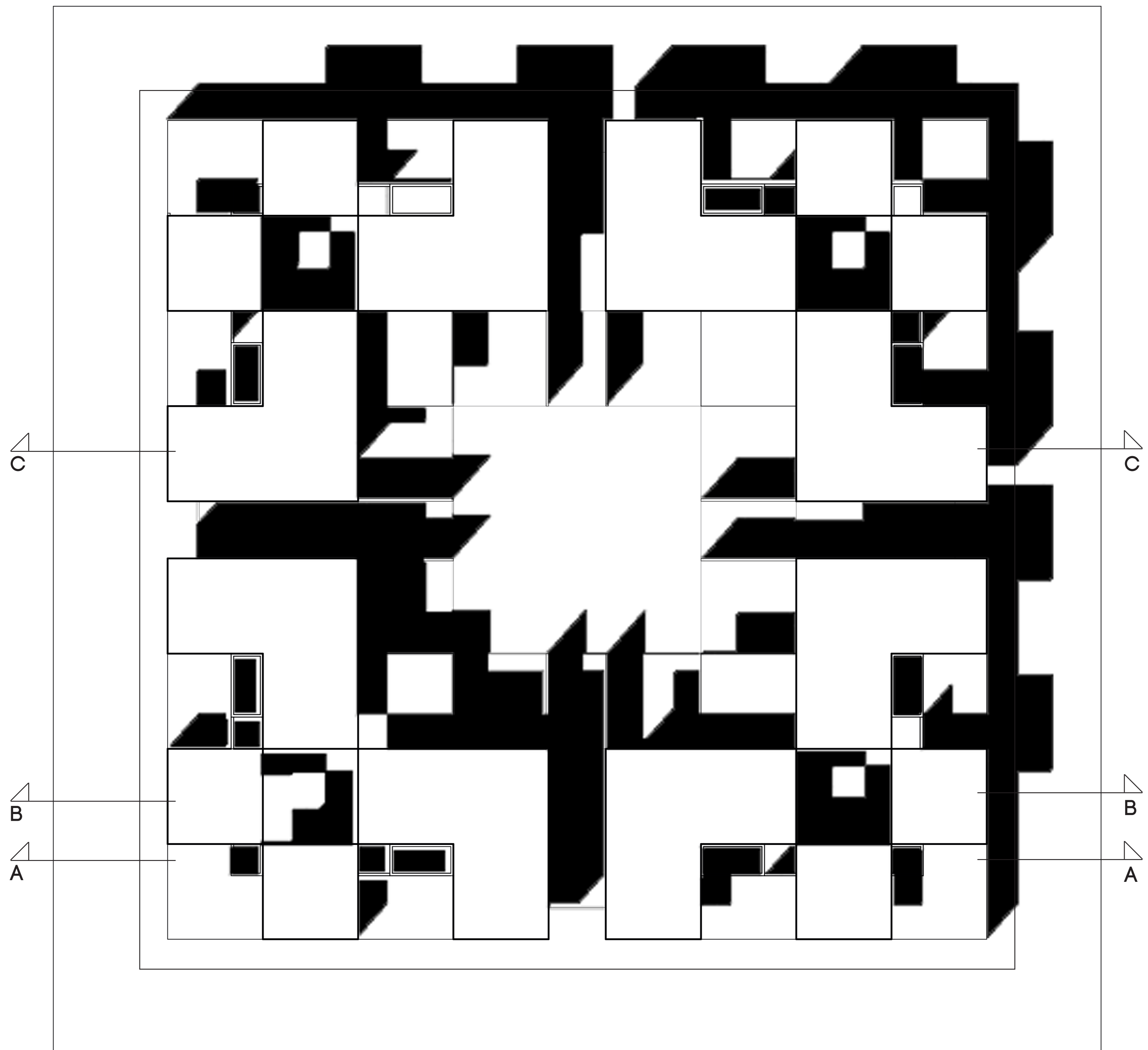
_pavillon de Barcelone
LUDWIG MIES VAN DER ROHE



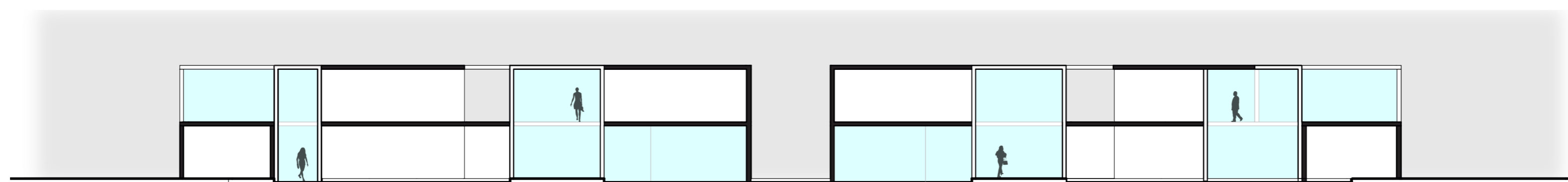
PLAN DU REZ DE CHAUSSÉE _ échelle 1:200



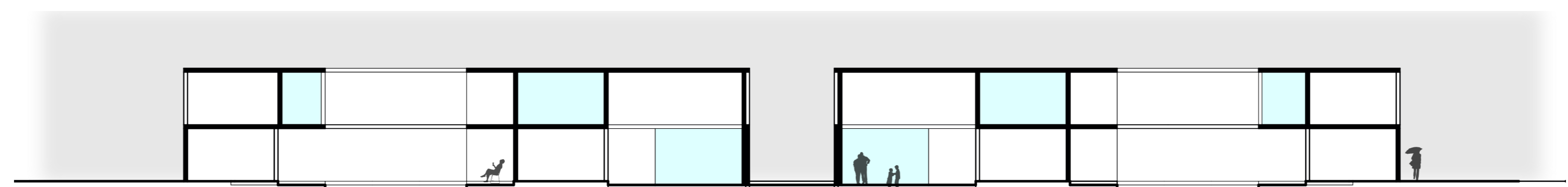
PLAN DU PREMIER ÉTAGE _ échelle 1:200



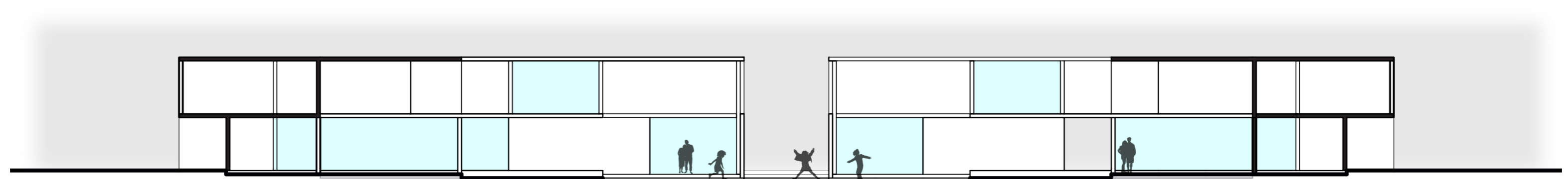
PLAN DE TOITURE OMBRÉ _échelle 1:200



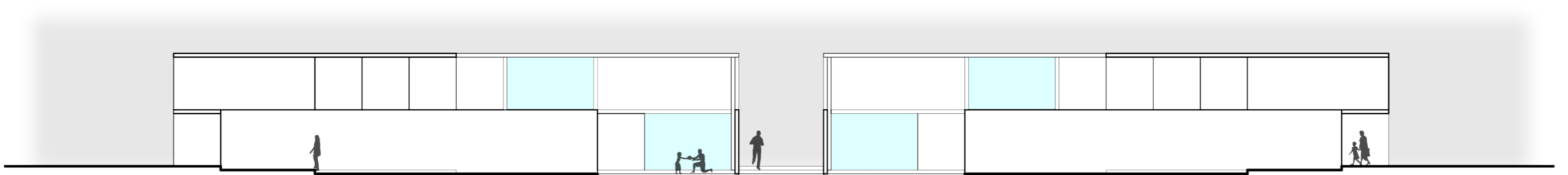
COUPE AA _échelle 1:200



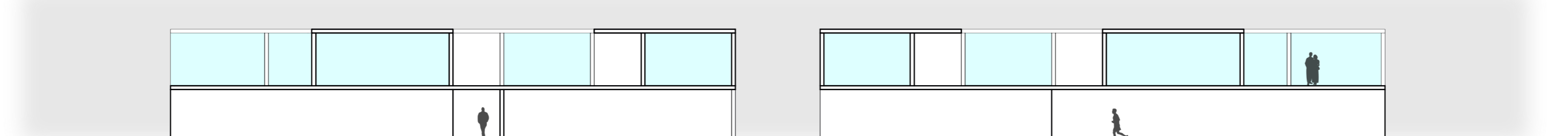
COUPE BB _échelle 1:200



COUPE CC _échelle 1:200



ÉLÉVATION MILIEU _échelle 1:200



ÉLÉVATION _échelle 1:200

SCHÉMA PRIVÉ ET PUBLIC

_ descente graduelle vers un espace de plus en plus commun

GRADATION SELON LA TOPOGRAPHIE. LE PLUS PÂLE EST LE PLUS BAS ET PAR LE FAIT MÊME LE PLUS PUBLIC.

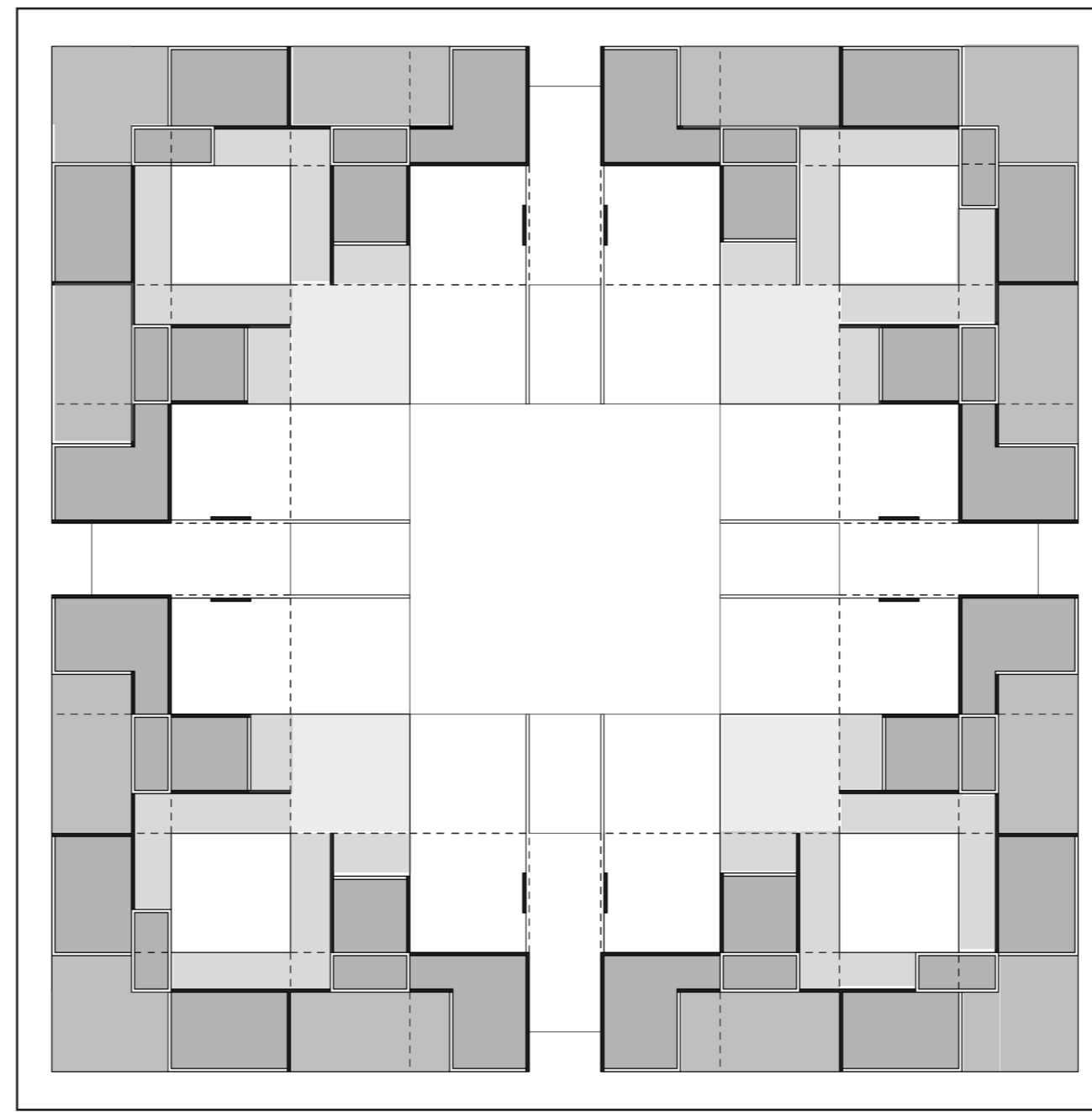
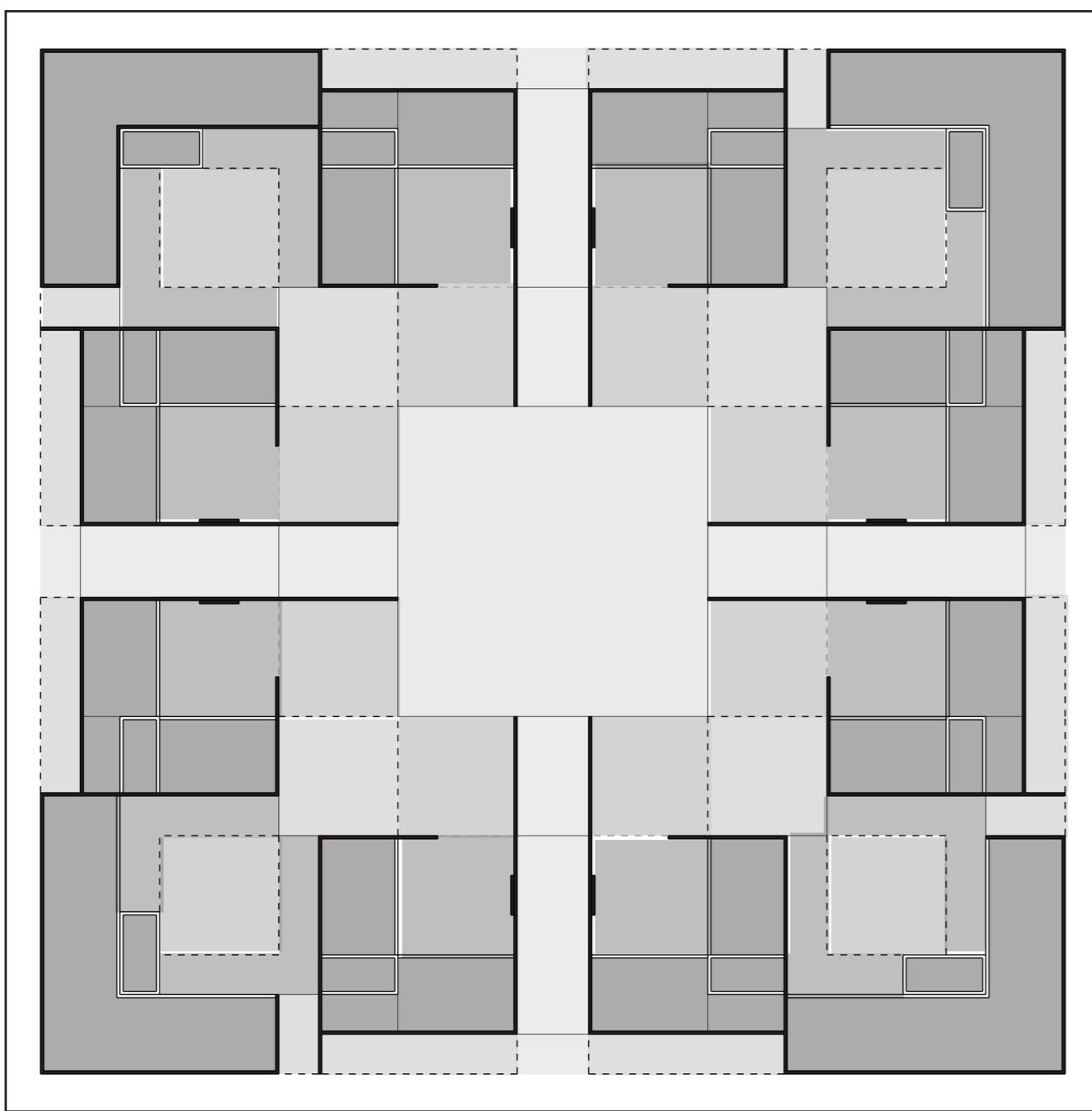


SCHÉMA DES ESPACES EXTÉRIEURES

_ différentes sortes d'espaces extérieurs permettent différentes appropriations

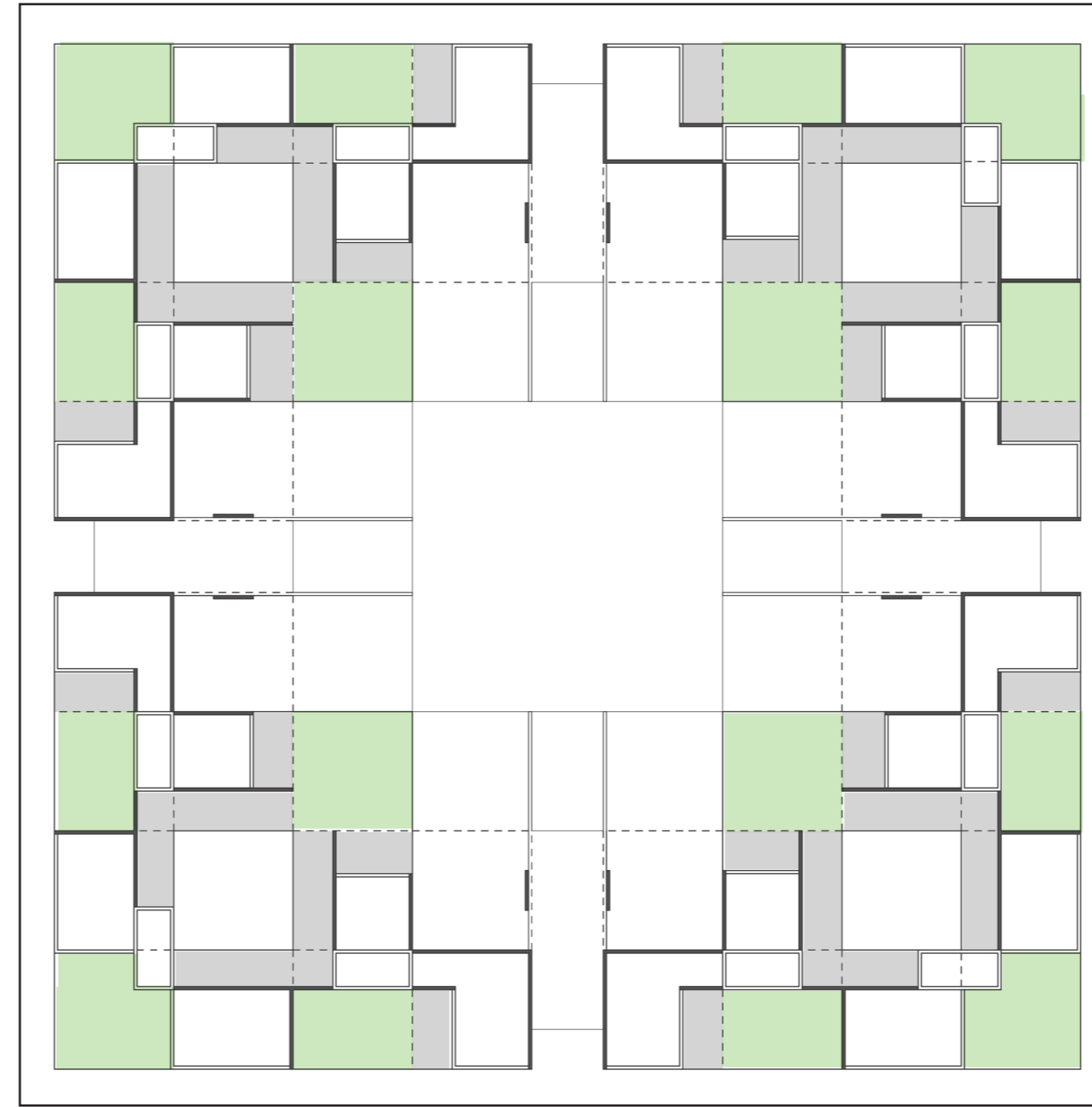
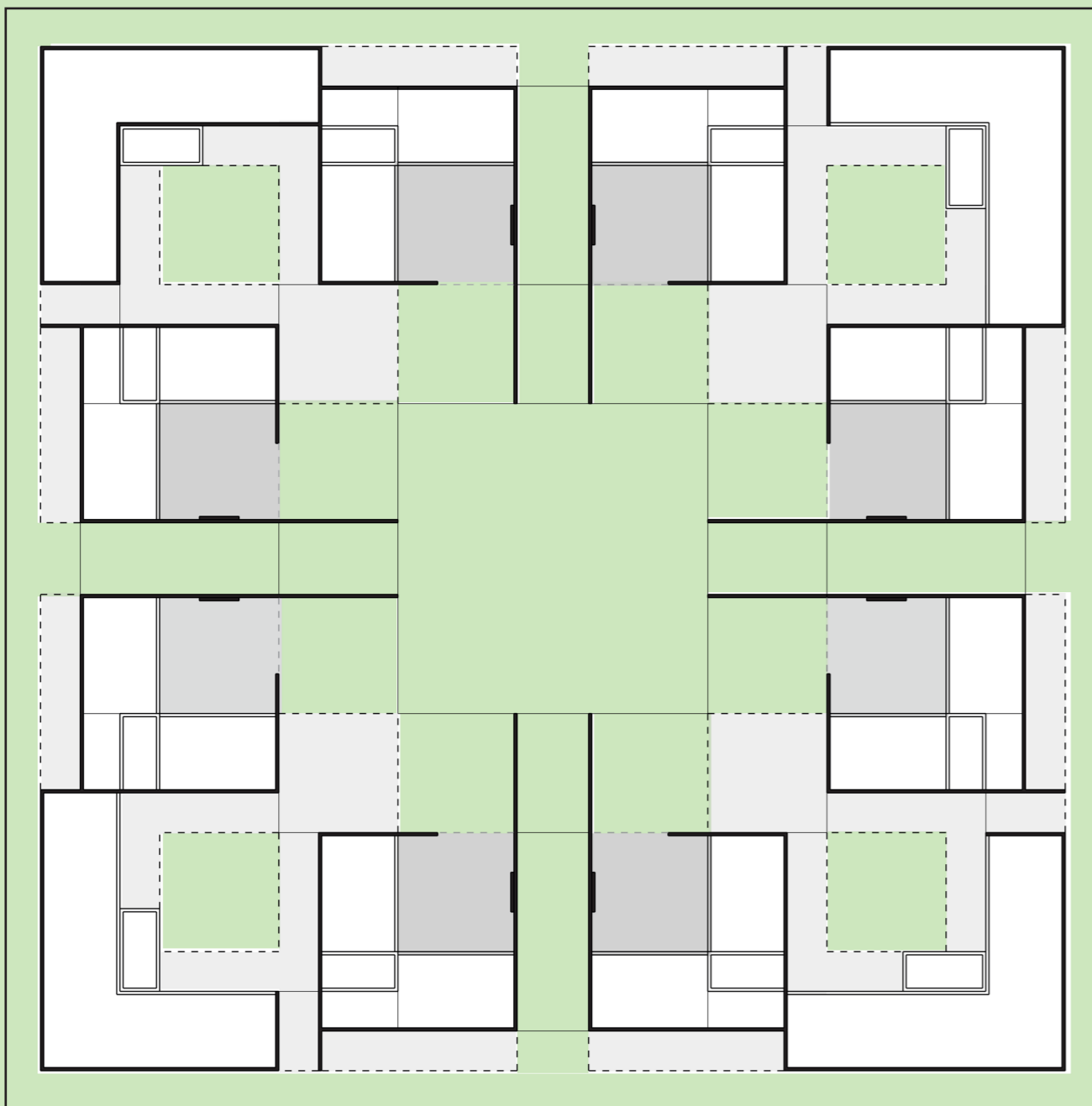
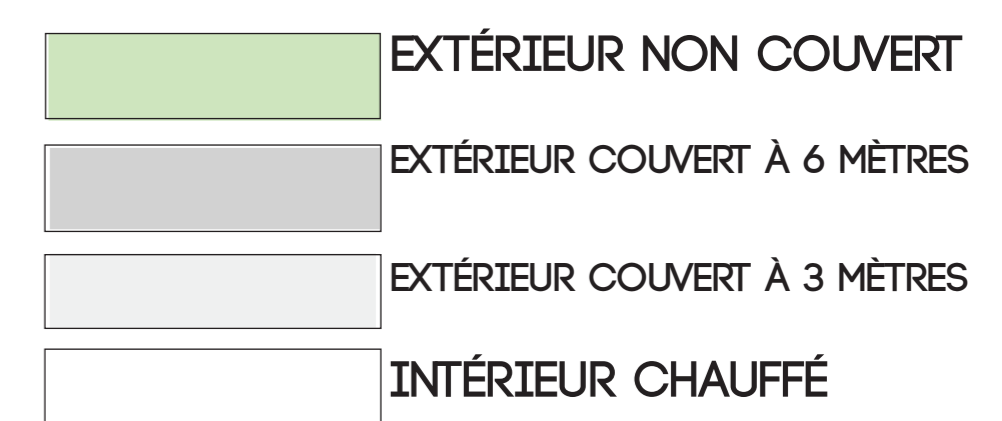


SCHÉMA DE CIRCULATION EXTÉRIEURE

_ mouvement progressif vers l'extérieur, passant d'un intérieur chauffé à un extérieur couvert puis un extérieur non couvert

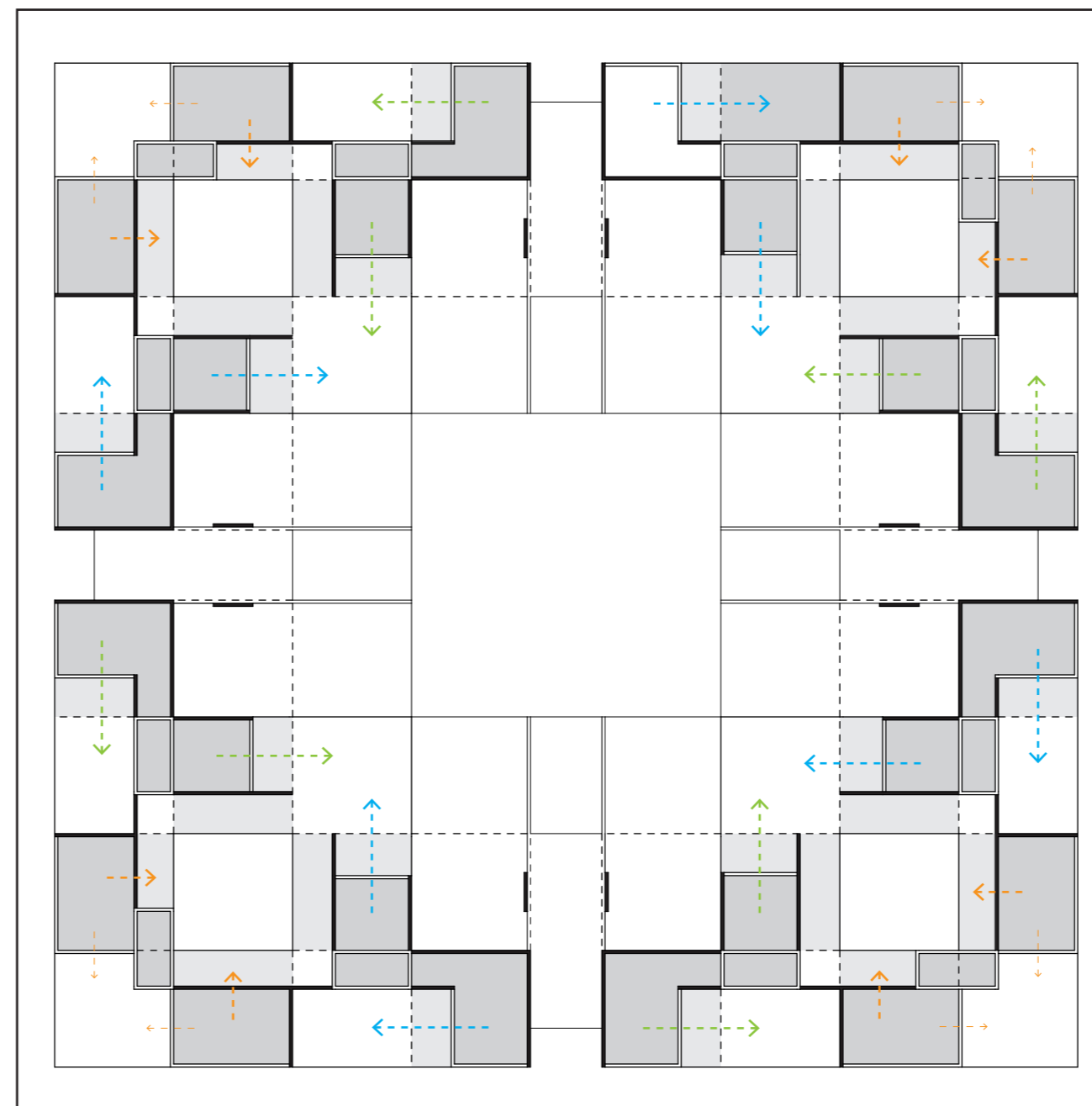
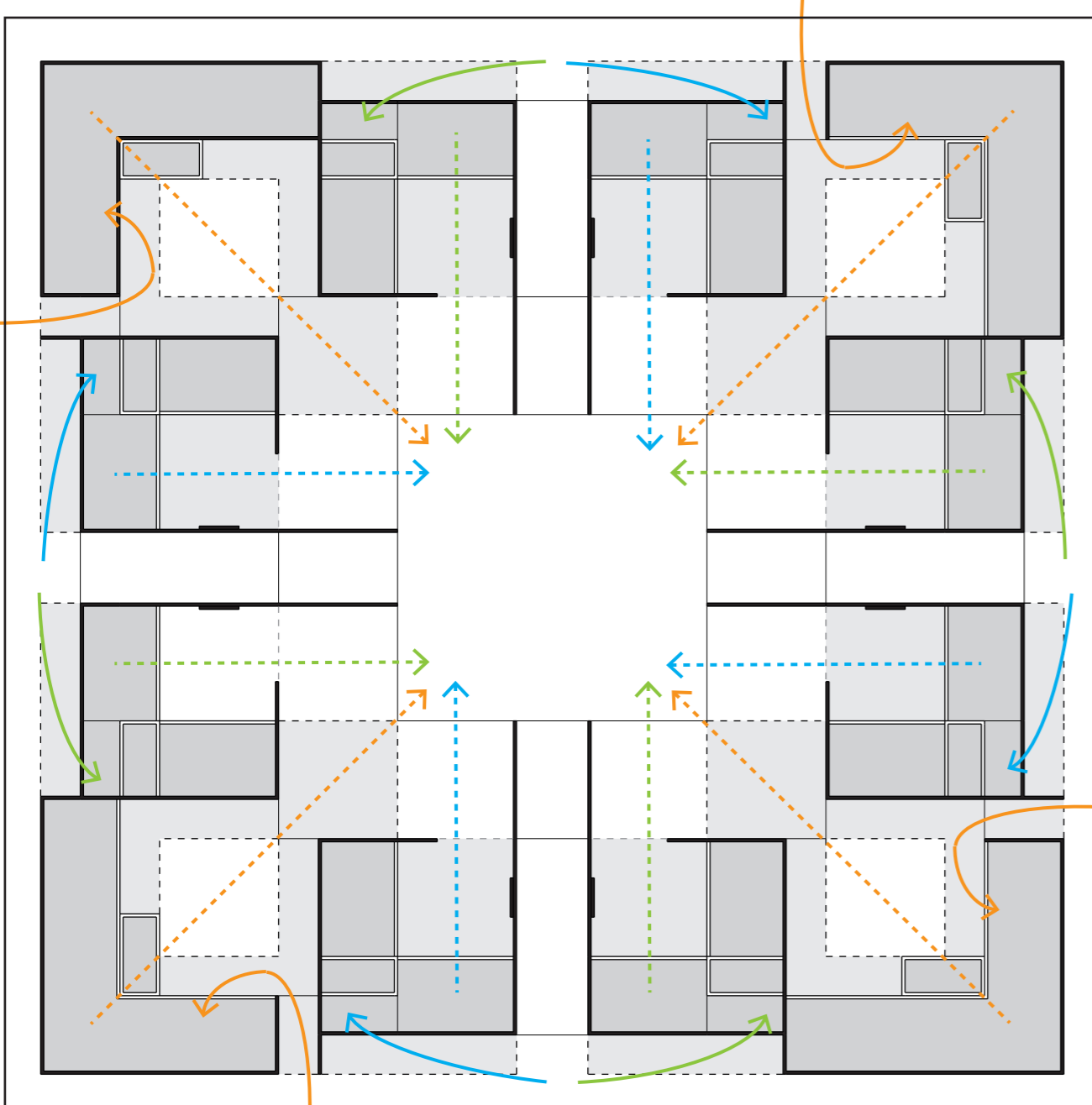
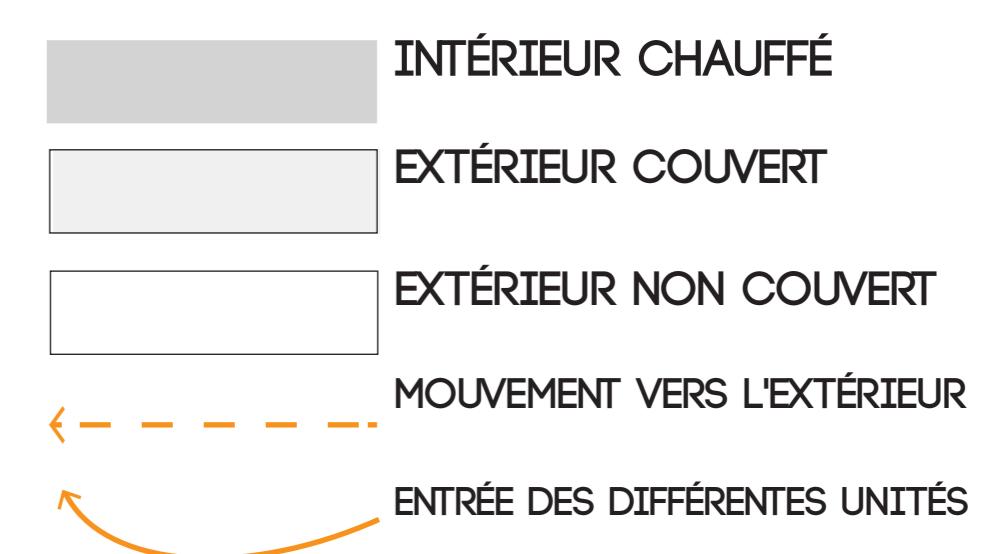
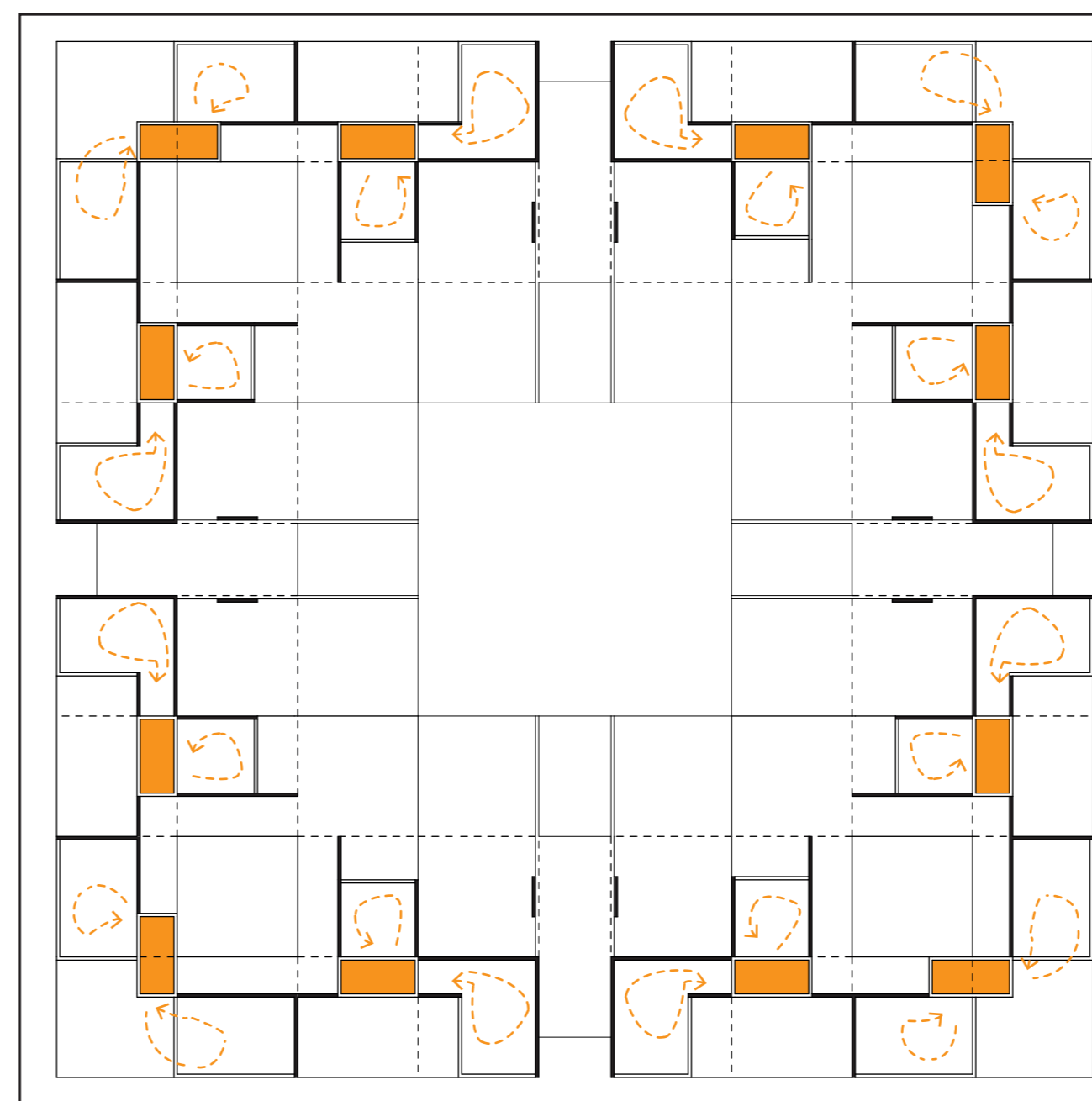
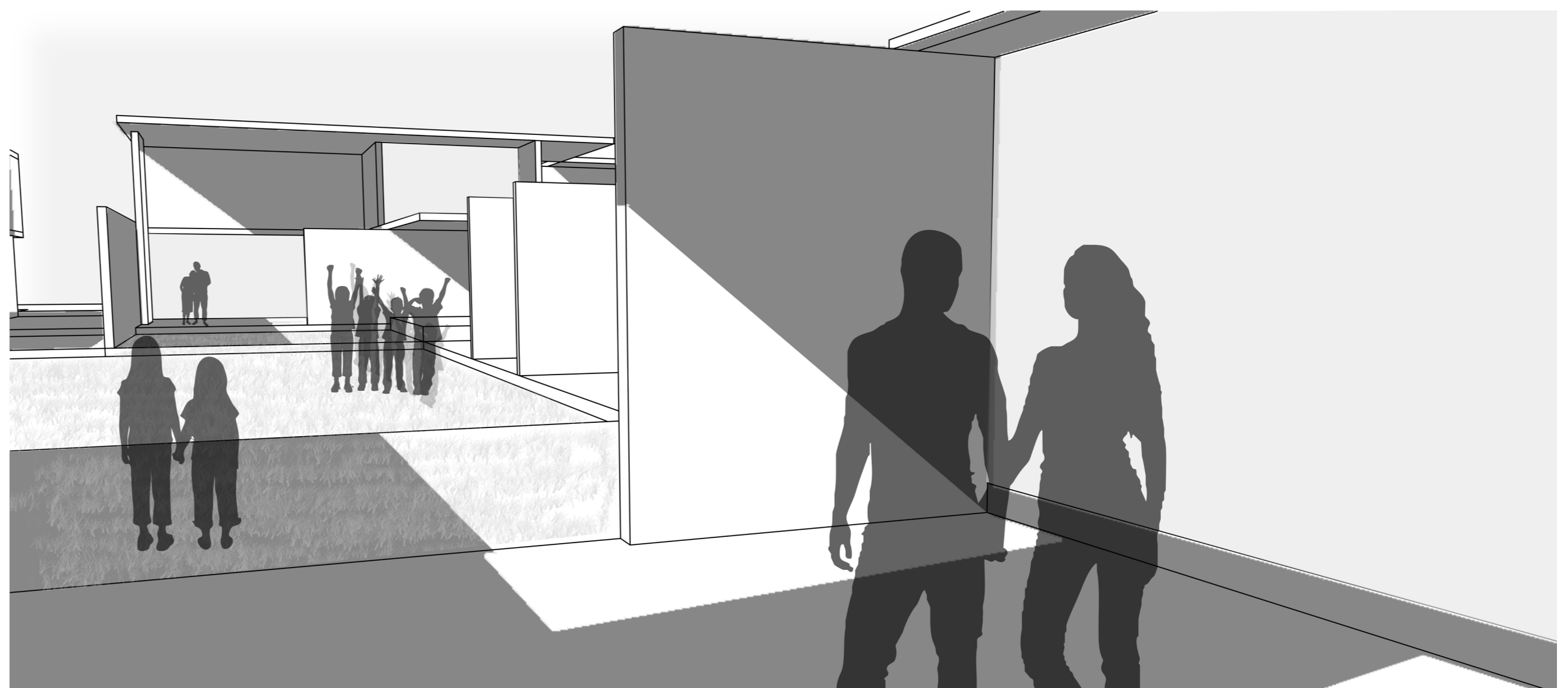
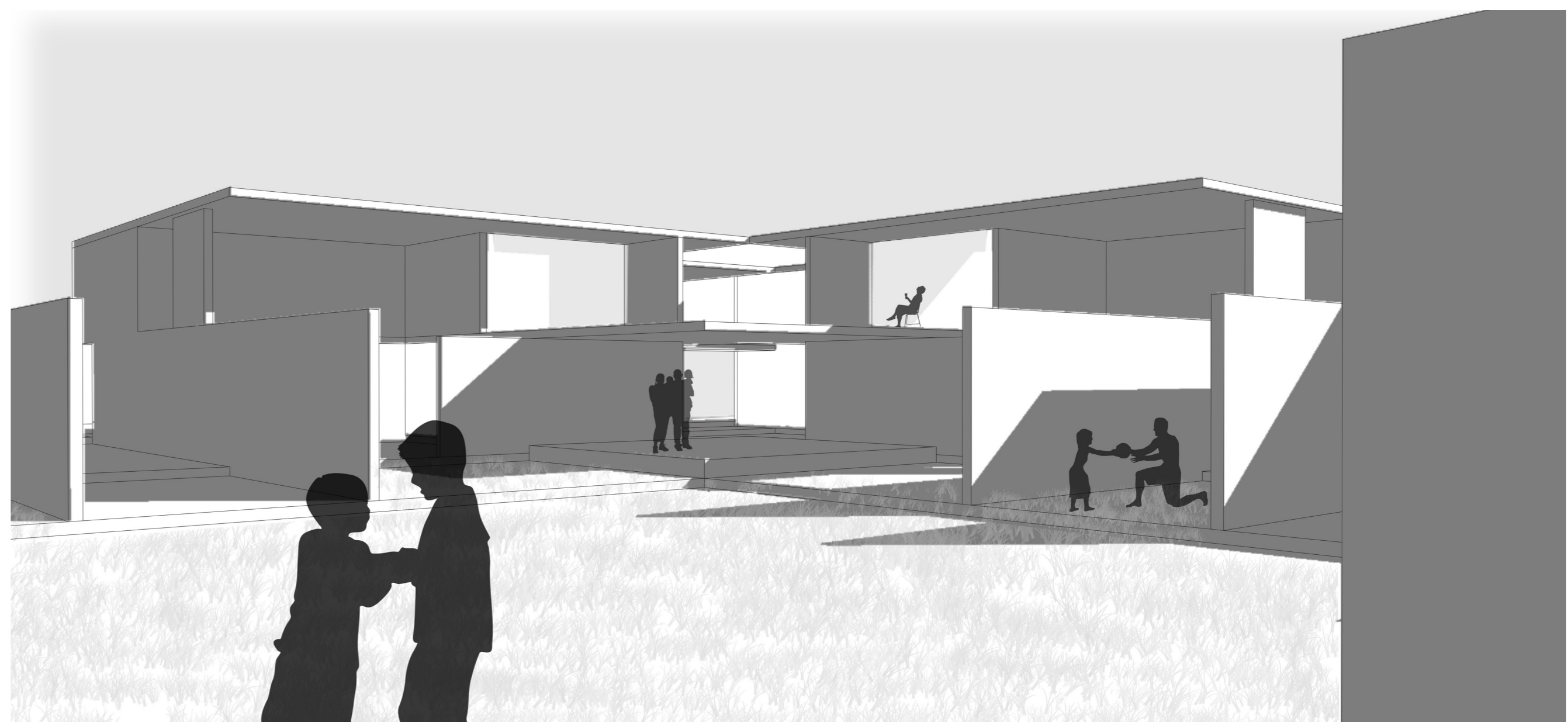
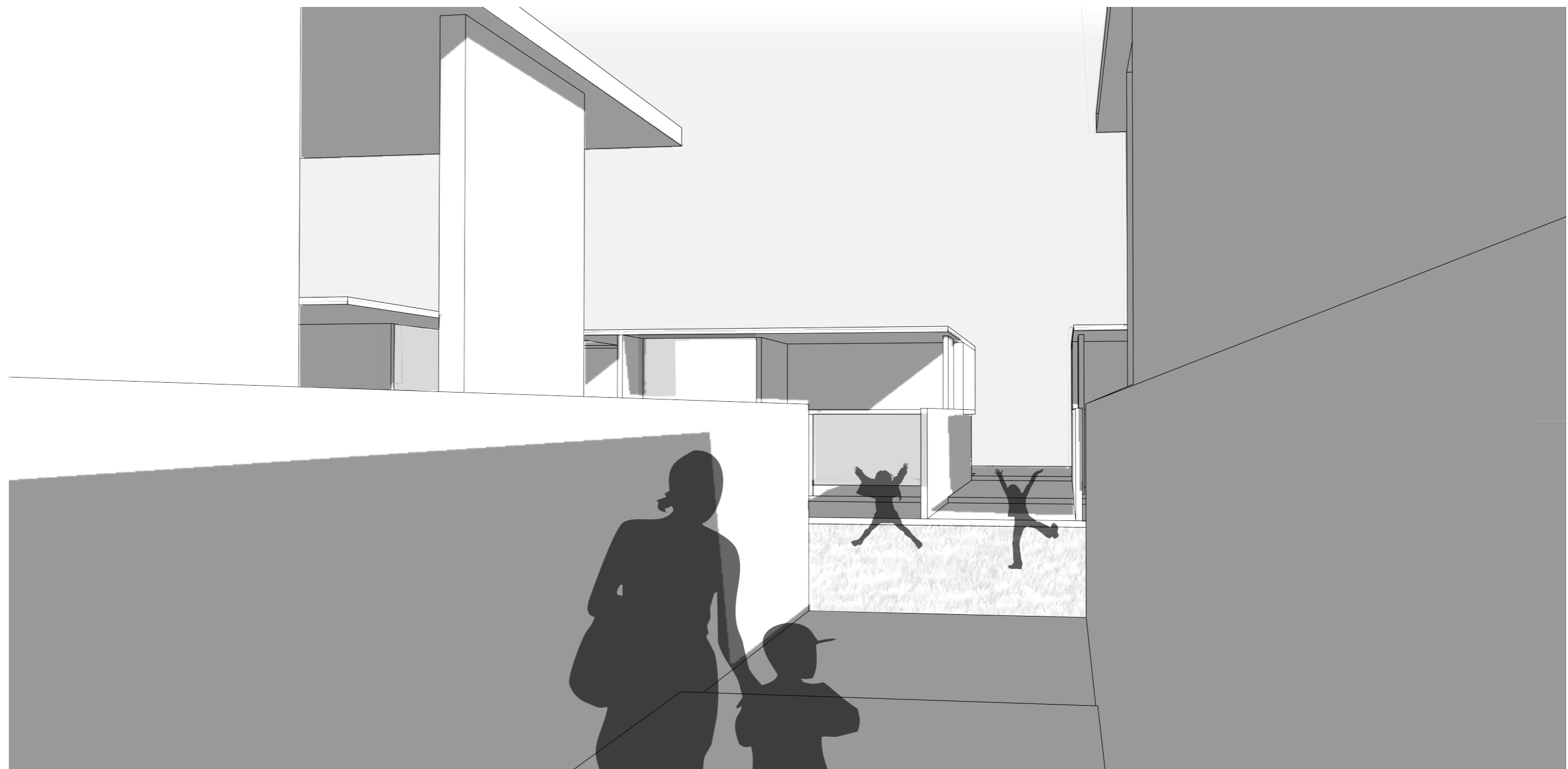
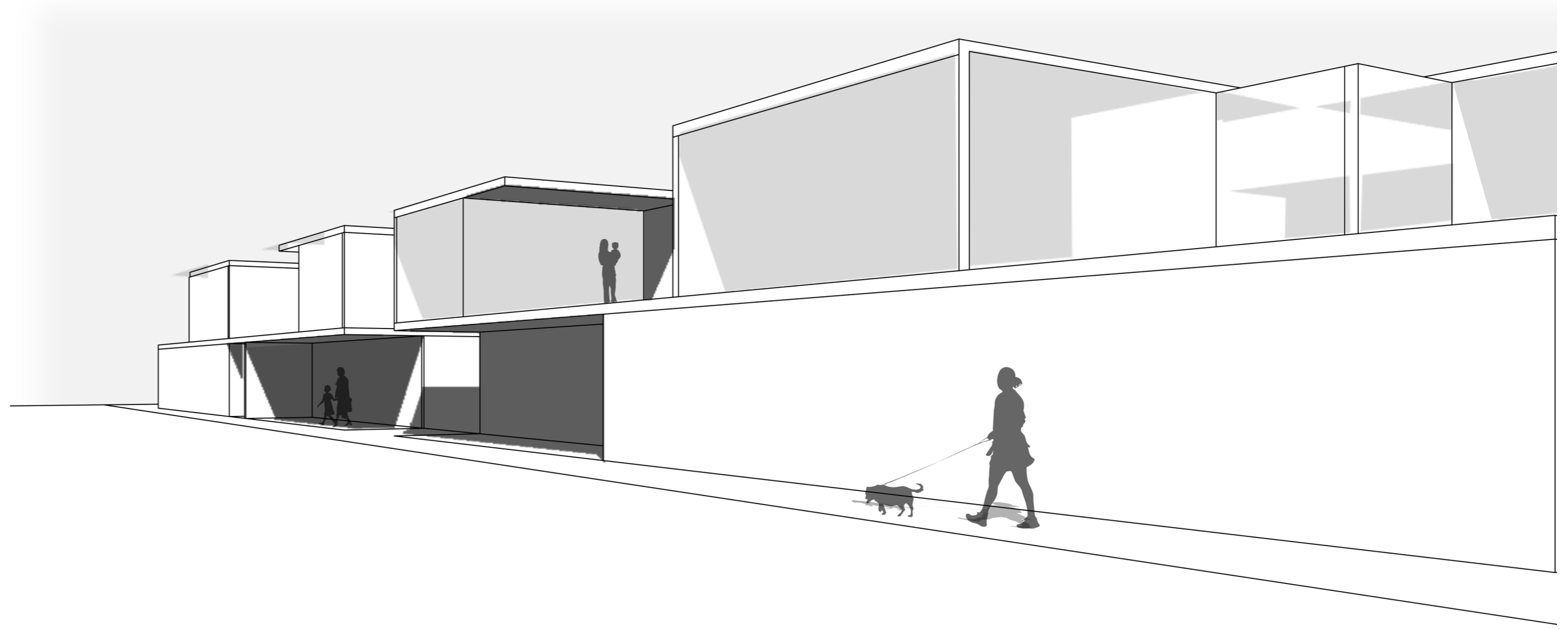
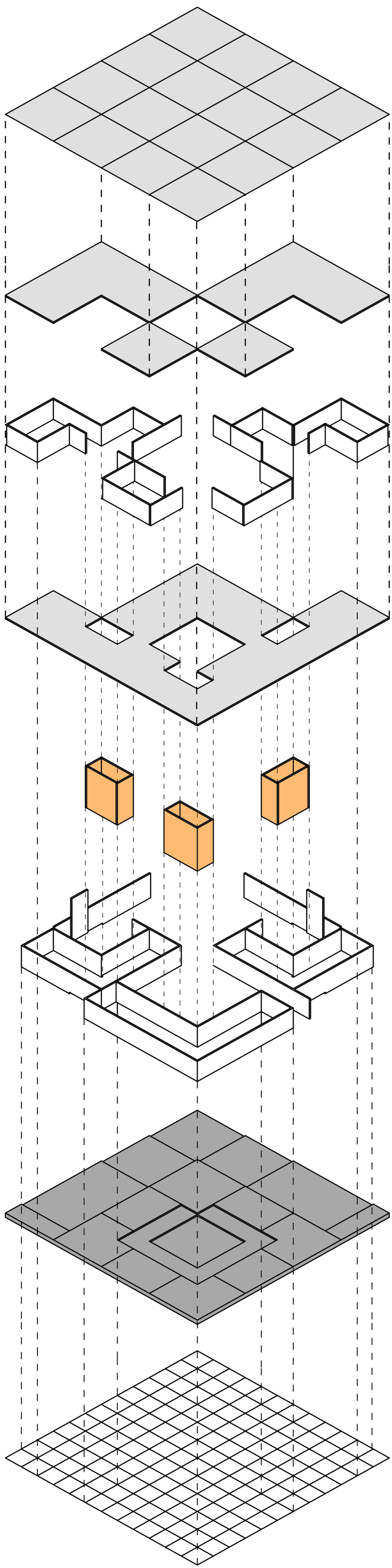


SCHÉMA DE CIRCULATION INTÉRIEURE

_ le bloc de circulation verre agit comme un puit de lumière et correspond au coeur de l'unité, d'où les autres mouvements s'articulent.





AXONOMÉTRIE ÉCLATÉE